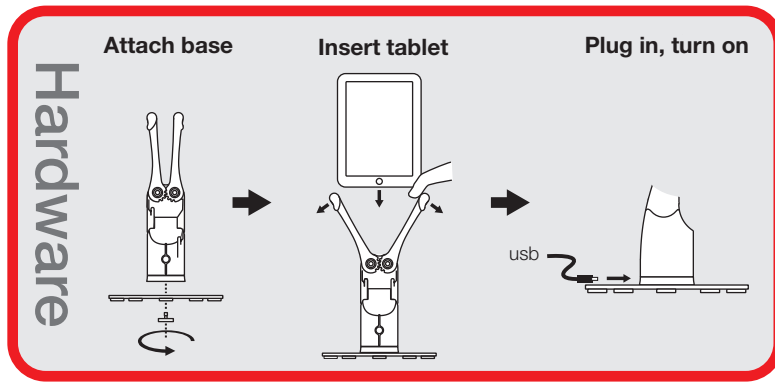
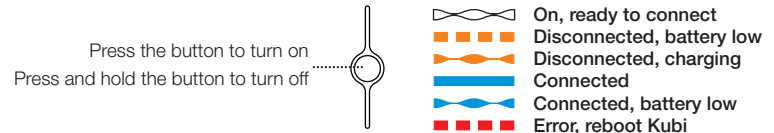


kubi quick start guide

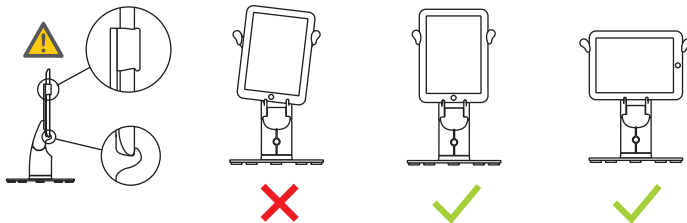
Kubi makes video calls easier and more engaging by turning Apple and Android tablets into web controlled telepresence robots that pan and tilt, letting you interact with people face to face.



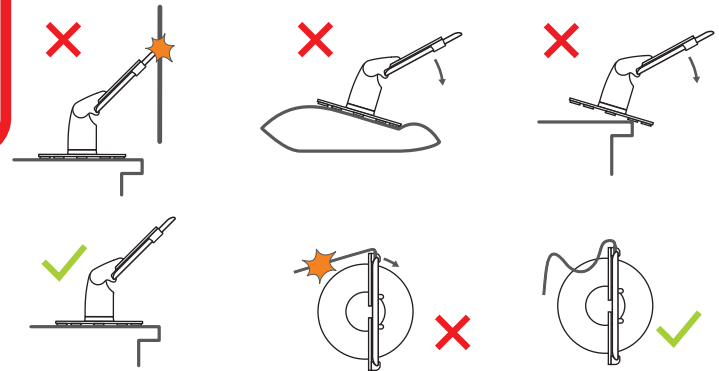
Control button & led status indicator



Software



Make sure the tablet is mounted securely



Make sure Kubi has plenty of room to move and is on a hard, flat surface

Please setup and connect your **kubi** hardware first. Make sure your **kubi** tablet's Bluetooth is turned on and turn on the **kubi**.

kubi can be used with most video conferencing software along with **kubi Control** to control the **kubi**. Download the **kubi Control** app for iPad or Android, install it on the **kubi's** tablet and open the app. **kubi** will connect to the tablet.

On your laptop, desktop or mobile device, use your browser and go to www.kubi.me/A1B2C3 where "A1B2C3" is the serial number of the **kubi** you want to control (or copy the link from the **kubi Control** app and send it in an email). Connect your video meeting. Use the grid to control **kubi** movements in one window and run video conference in a second window. For mobile, use a tablet for video and smartphone to run **kubi Control** and drive **kubi**.

Visit www.kubiconnect.com/ for more **kubi Control** info, plus setup and support information.